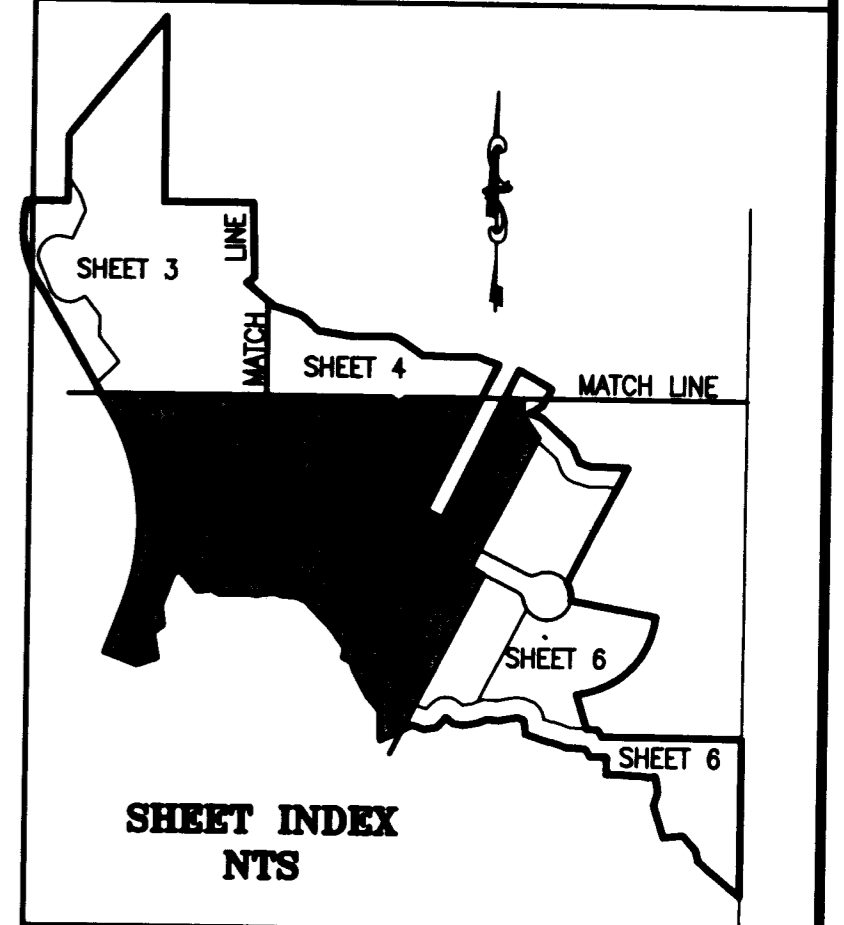
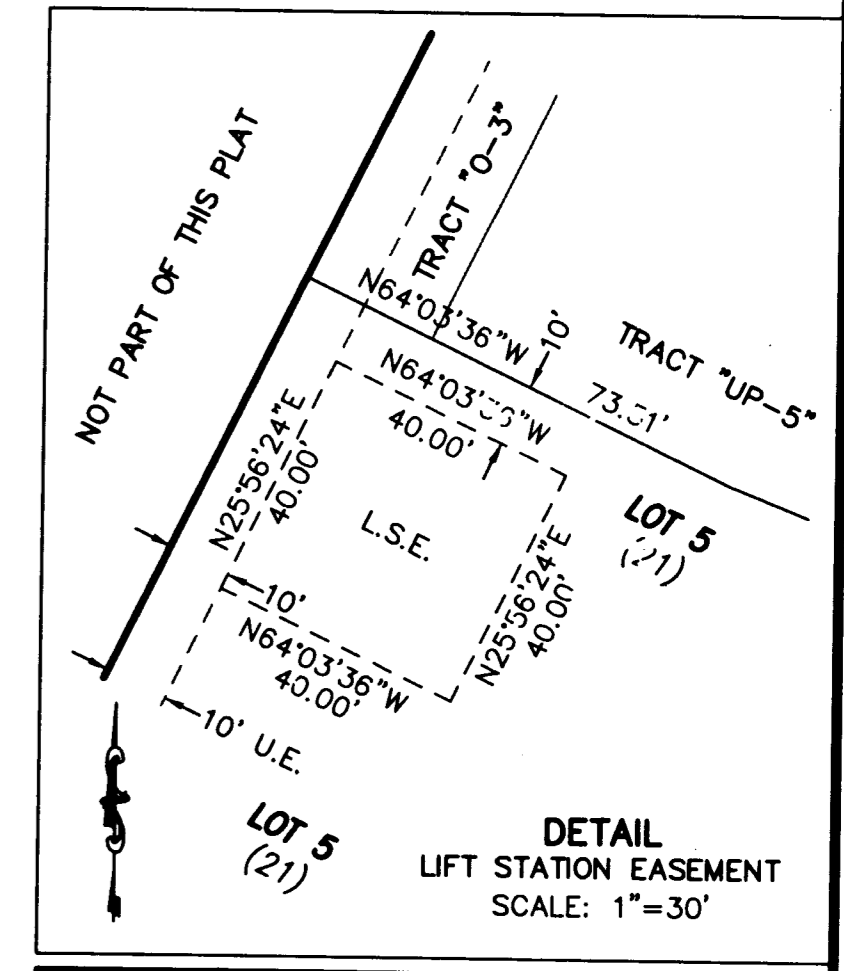
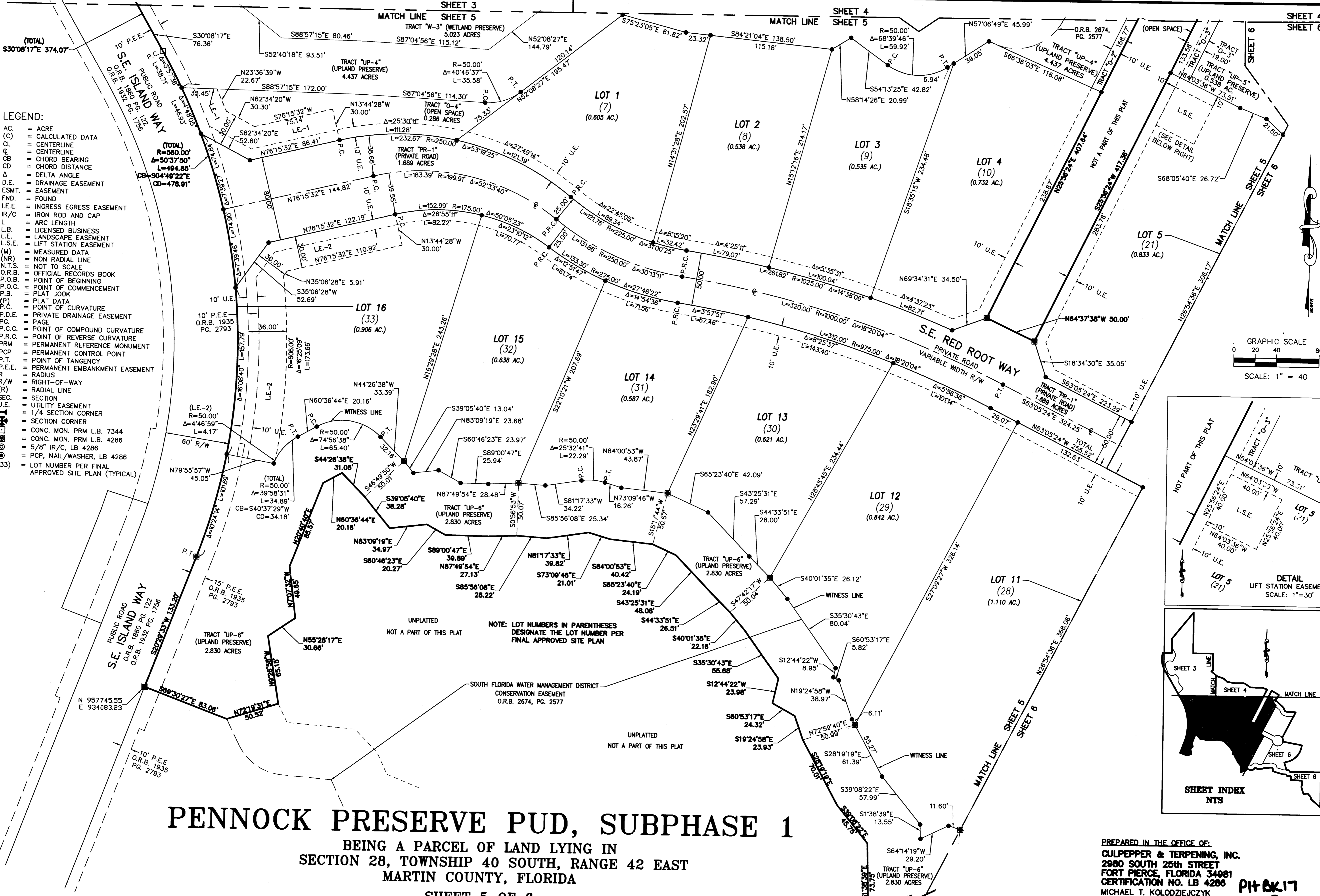


- LEGEND:**
- AC. = ACRE
  - (C) = CALCULATED DATA
  - CL = CENTERLINE
  - CB = CHORD BEARING
  - CD = CHORD DISTANCE
  - Δ = DELTA ANGLE
  - D.E. = DRAINAGE EASEMENT
  - ESMT. = EASEMENT
  - FND. = FOUND
  - I.E.E. = INGRESS EGRESS EASEMENT
  - IR/C = IRON ROD AND CAP
  - L = ARC LENGTH
  - L.B. = LICENSED BUSINESS
  - L.E. = LANDSCAPE EASEMENT
  - L.S.E. = LIFT STATION EASEMENT
  - (M) = MEASURED DATA
  - (NR) = NON RADIAL LINE
  - N.T.S. = NOT TO SCALE
  - O.R.B. = OFFICIAL RECORDS BOOK
  - P.O.B. = POINT OF BEGINNING
  - P.O.C. = POINT OF COMMENCEMENT
  - P.B. = PLAT BOOK
  - (P) = PLAT DATA
  - P.C. = POINT OF CURVATURE
  - P.D.E. = PRIVATE DRAINAGE EASEMENT
  - PG. = PAGE
  - P.C.C. = POINT OF COMPOUND CURVATURE
  - P.R.C. = POINT OF REVERSE CURVATURE
  - PRM = PERMANENT REFERENCE MONUMENT
  - PCP = PERMANENT CONTROL POINT
  - P.T. = POINT OF TANGENCY
  - P.E.E. = PERMANENT EMBANKMENT EASEMENT
  - R = RADIUS
  - R/W = RIGHT-OF-WAY
  - (R) = RADIAL LINE
  - SEC. = SECTION
  - U.E. = UTILITY EASEMENT
  - 1/4 = 1/4 SECTION CORNER
  - SC = SECTION CORNER
  - CONC. MON. PRM L.B. 7344 = CONC. MON. PRM L.B. 7344
  - CONC. MON. PRM L.B. 4286 = CONC. MON. PRM L.B. 4286
  - 5/8" IR/C, LB 4286 = 5/8" IR/C, LB 4286
  - PCP, NAIL/WASHER, LB 4286 = PCP, NAIL/WASHER, LB 4286
  - (33) = LOT NUMBER PER FINAL APPROVED SITE PLAN (TYPICAL)



**PENNOCK PRESERVE PUD, SUBPHASE 1**  
 BEING A PARCEL OF LAND LYING IN  
 SECTION 28, TOWNSHIP 40 SOUTH, RANGE 42 EAST  
 MARTIN COUNTY, FLORIDA  
 SHEET 5 OF 6

PREPARED IN THE OFFICE OF:  
**CULPEPPER & TERPENING, INC.**  
 2980 SOUTH 25th STREET  
 FORT PIERCE, FLORIDA 34981  
 CERTIFICATION NO. LB 4286  
 MICHAEL T. KOLODZIEJCZYK  
 PROFESSIONAL SURVEYOR AND MAPPER  
 FLORIDA CERTIFICATE No. 3864